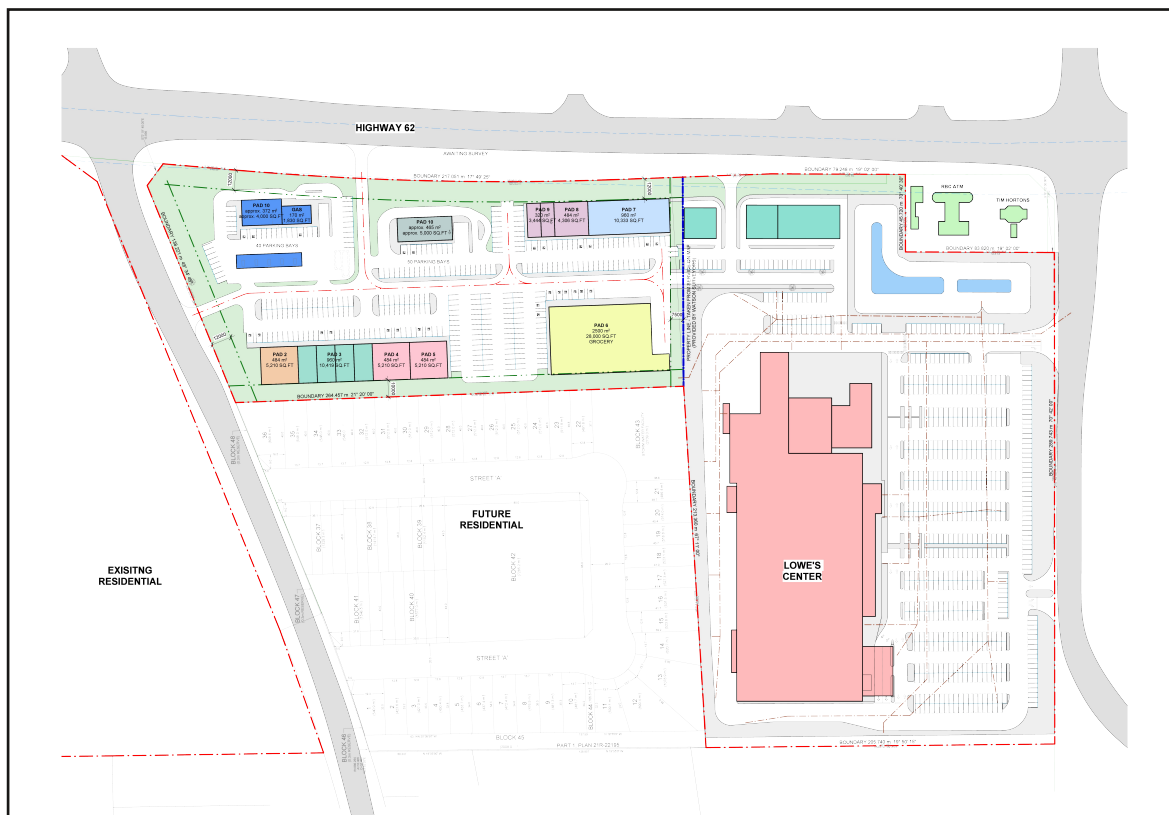
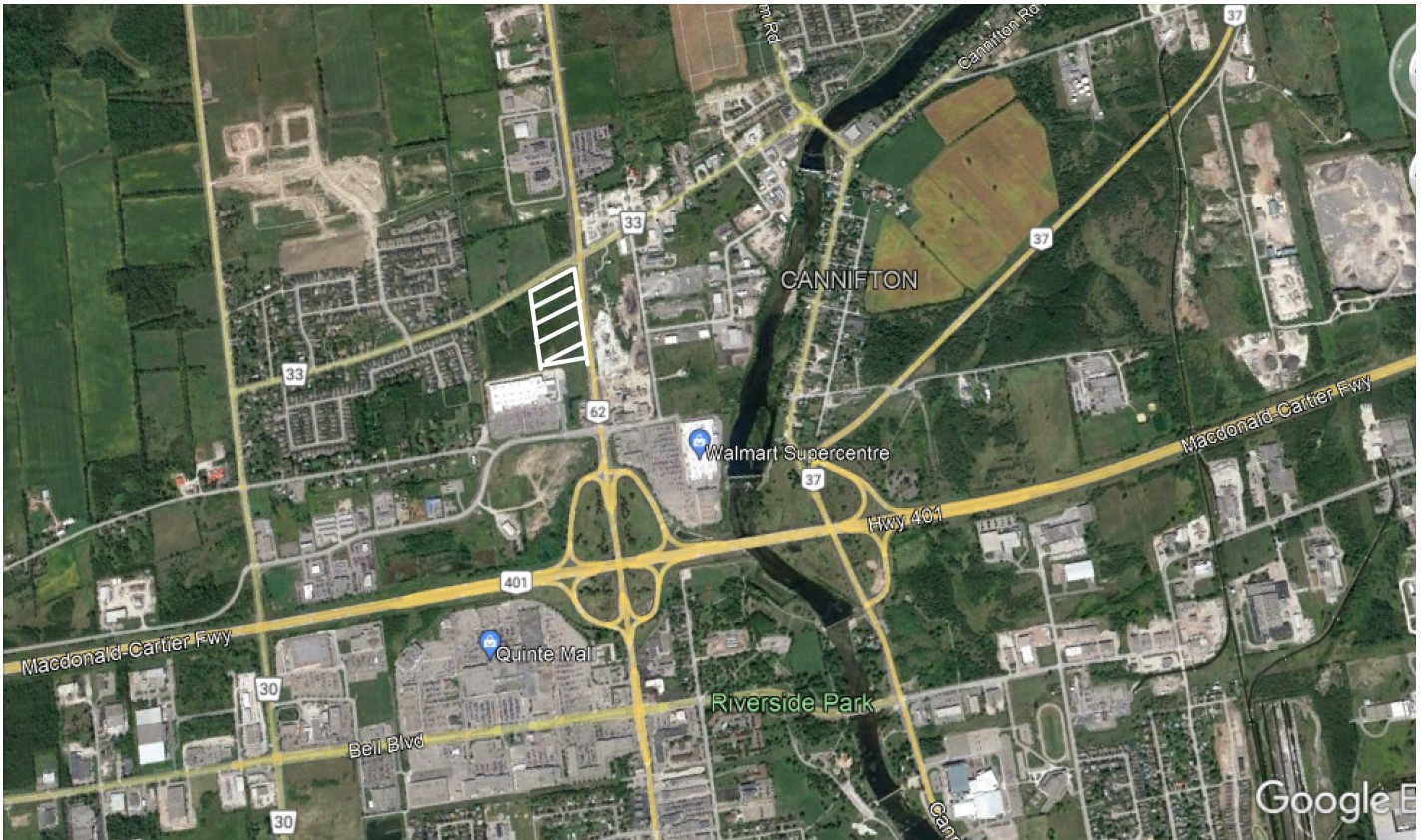


MAITLAND CENTRE Belleville, Ontario

- Located on north side of 401 interchange in Belleville with Lowe's and Walmart (across the street) shadow anchors
- New Build, 70,000 sf open air centre on 10 acre site with 1,000 ft frontage on highway 62 and cross easement with Lowe's parking lot. AADT 16,000 cars.
- Fully serviced with City infrastructure.
- Major residential growth on immediately adjacent lands and surrounding area.
- New homes subdivisions planned at Black Bear, Potter's Creek and Loyalist Secondary Plan.
- Entitlements, zoning and SPA application in progress.
- Planned for 2024-25 opening with grocery, QSR, fuel & convenience anchors.



For further inquiries, please contact
John Marino, Broker of Record, or **Dave Marino**, Broker
Marino Locations Limited, Brokerage
jmarino@marino.ca | 416-767-8865 x226
dmarino@marino.ca | 416-767-8865 x236



MARINO

MARINO LOCATIONS LIMITED, BROKERAGE

**Marino Locations Limited
Real Estate Brokerage**

208 Evans Ave, Toronto, ON, M8Z 1J7
416-767-8865 | info@marino.ca
www.marino.ca

